



Crabtree, Rohrbaugh & Associates

WYOMISSING AREA SCHOOL DISTRICT

BOARD UPDATE

FEBRUARY 17, 2021

DESIGN DEVELOPMENT PRESENTATION

- **Wyomissing Hills K-4 Educational Center**
 - Site Plan Review
 - Floor Plan Review
 - Typical Room Layouts
 - Renderings
- **Wyomissing Area Jr/Sr High School**
 - Site Plan Review
 - Floor Plan Review
 - Typical Room Layouts
 - Renderings
- **Project Schedule**

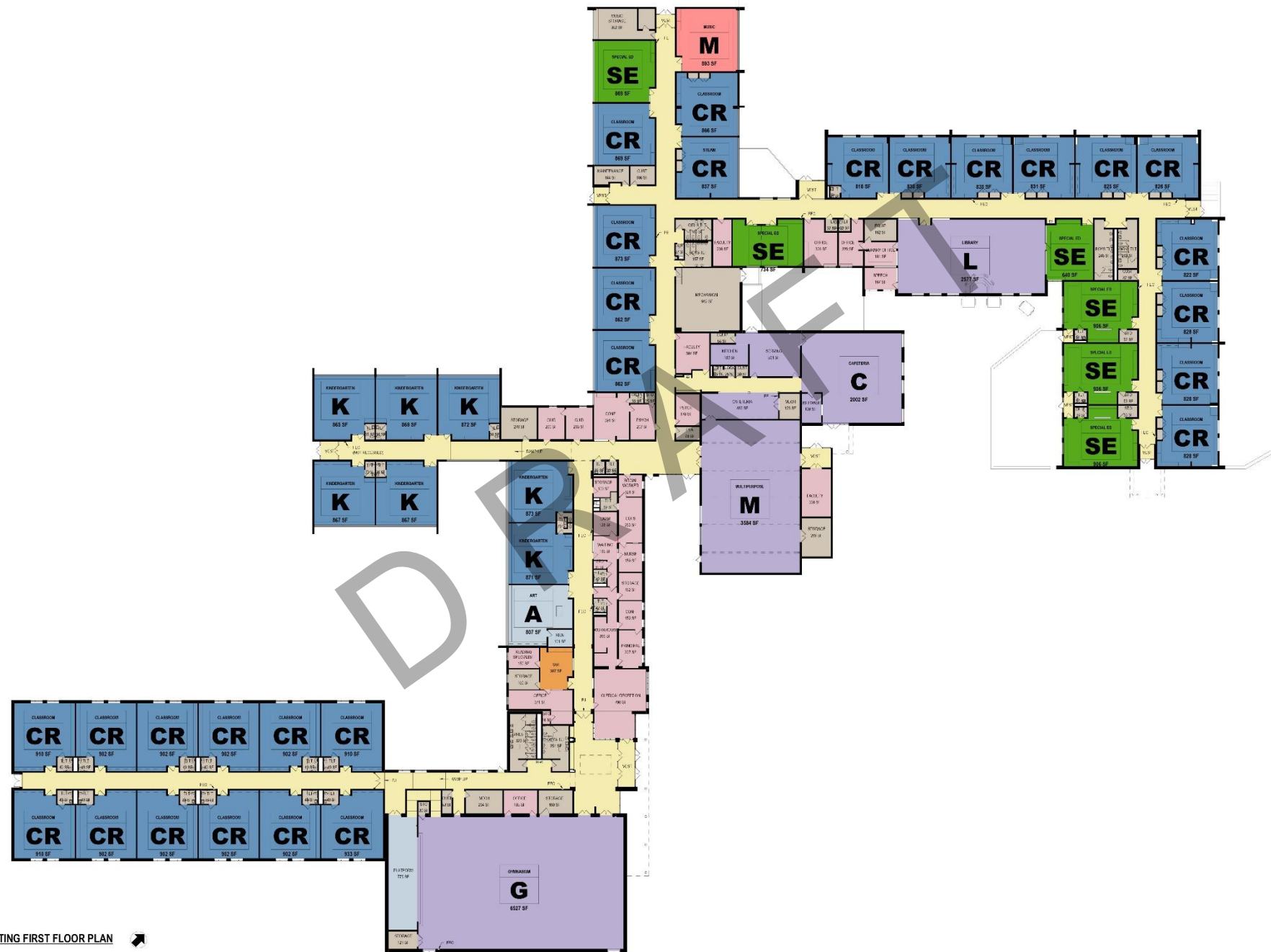
EXISTING WYOMISSING HILLS K-4



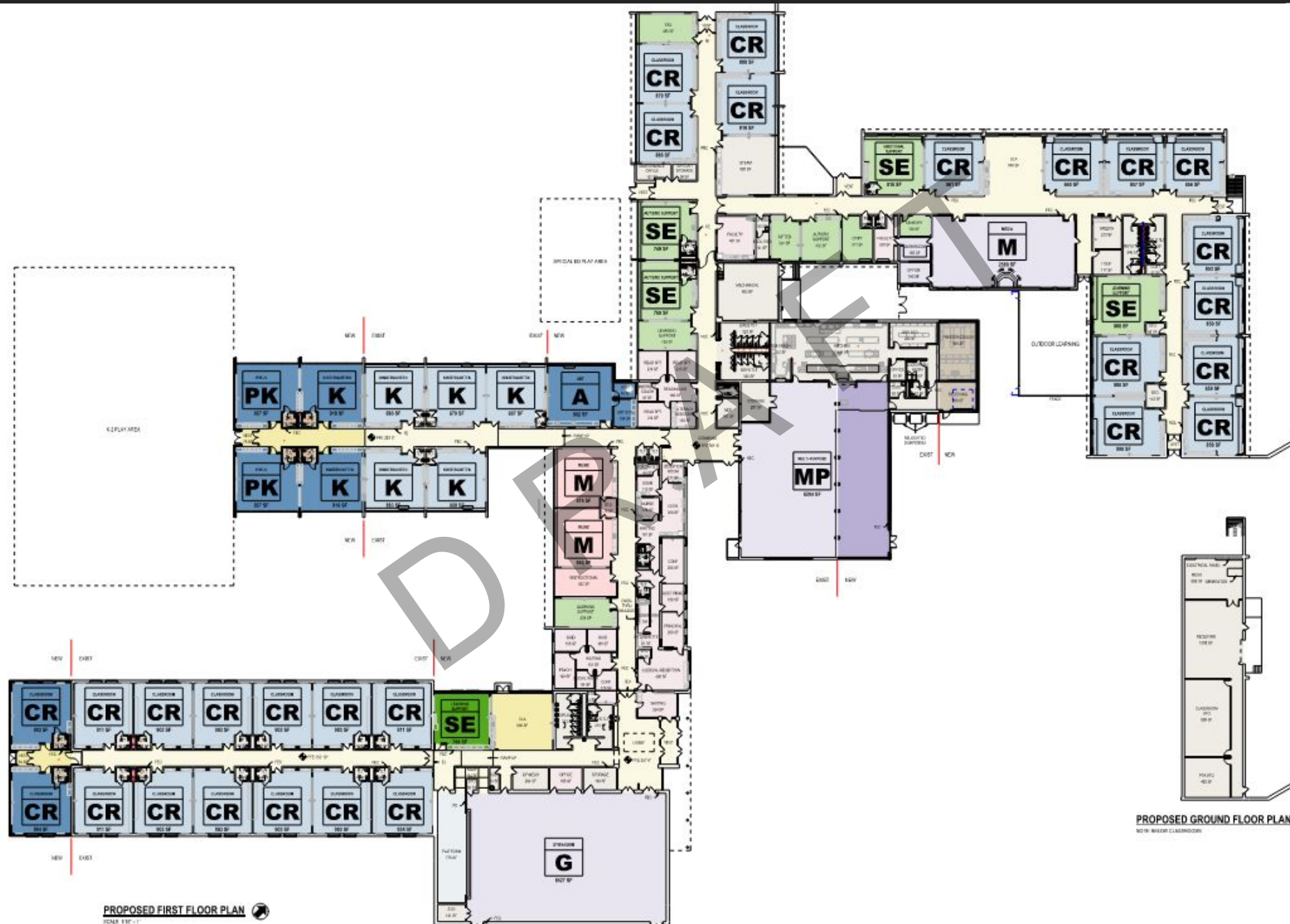
PROPOSED WYOMISSING HILLS K-4



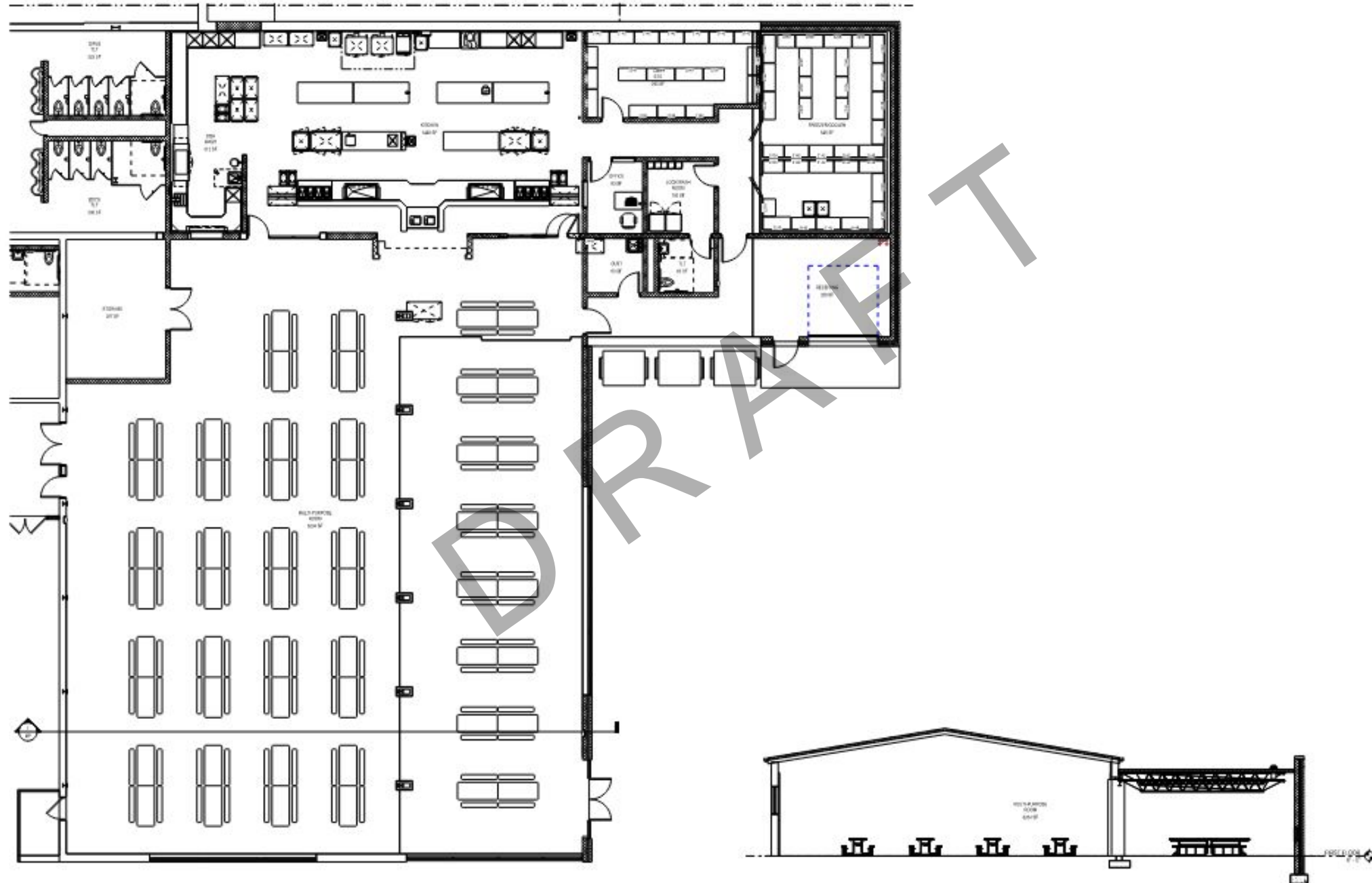
EXISTING WYOMISSING HILLS K-4

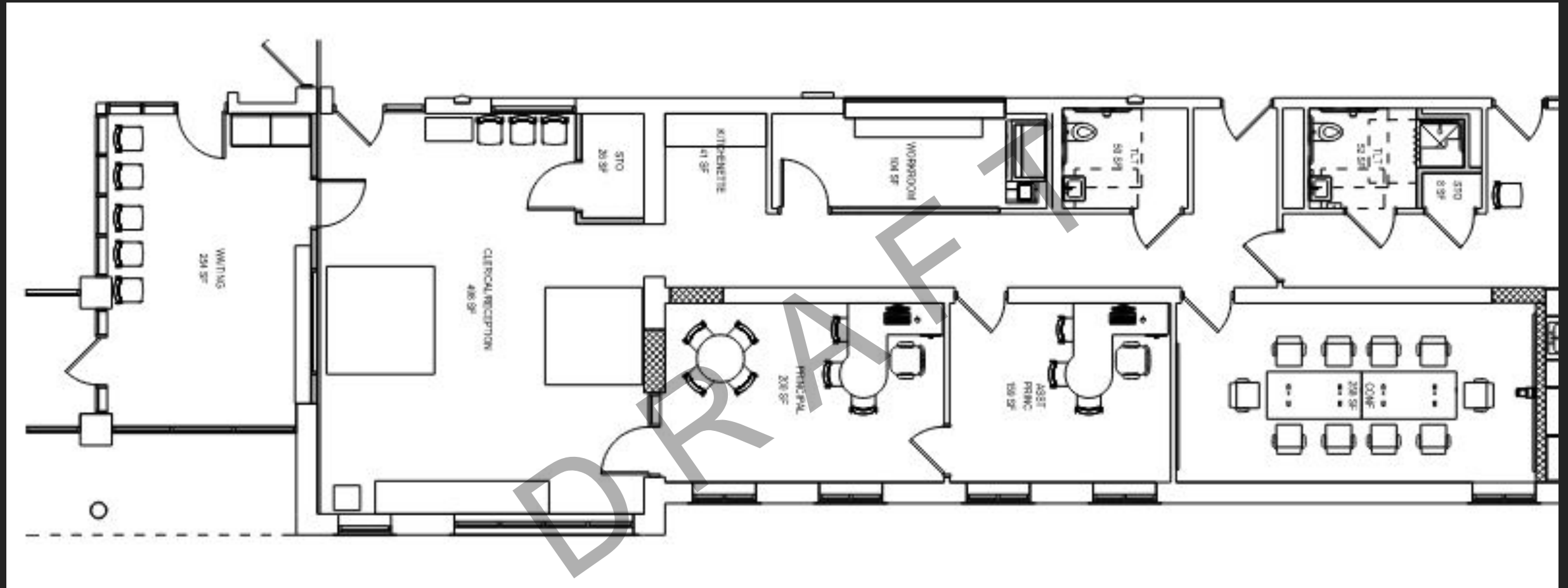


PROPOSED WYOMISSING HILLS K-4



PROPOSED WYOMISSING HILLS K-4





ADMINISTRATION AREA LAYOUT

PROPOSED WYOMISSING HILLS K-4



PROPOSED WYOMISSING HILLS K-4



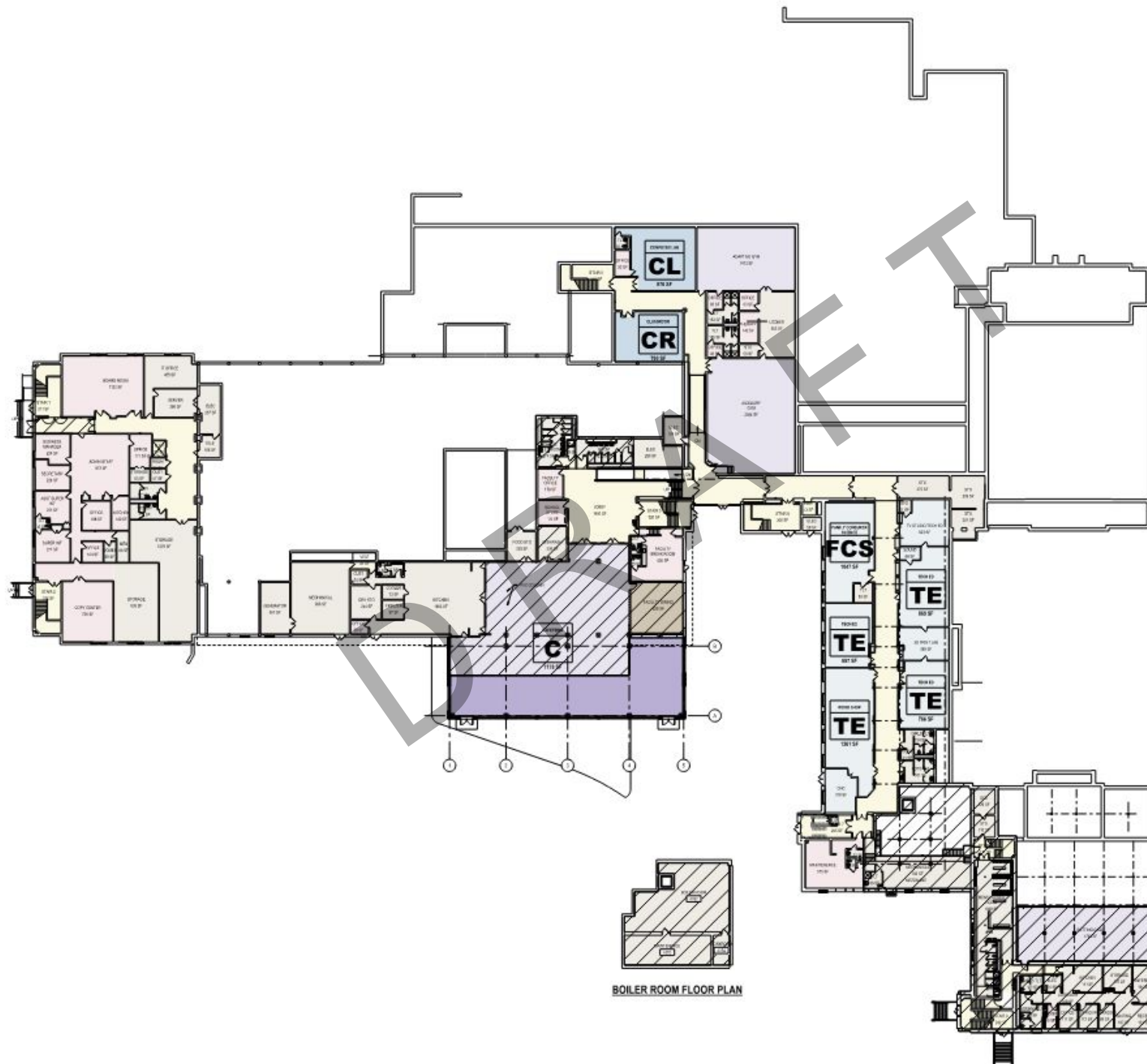
PROPOSED WYOMISSING HILLS K-4



PROPOSED WYOMISSING AREA JR/SR HIGH SCHOOL



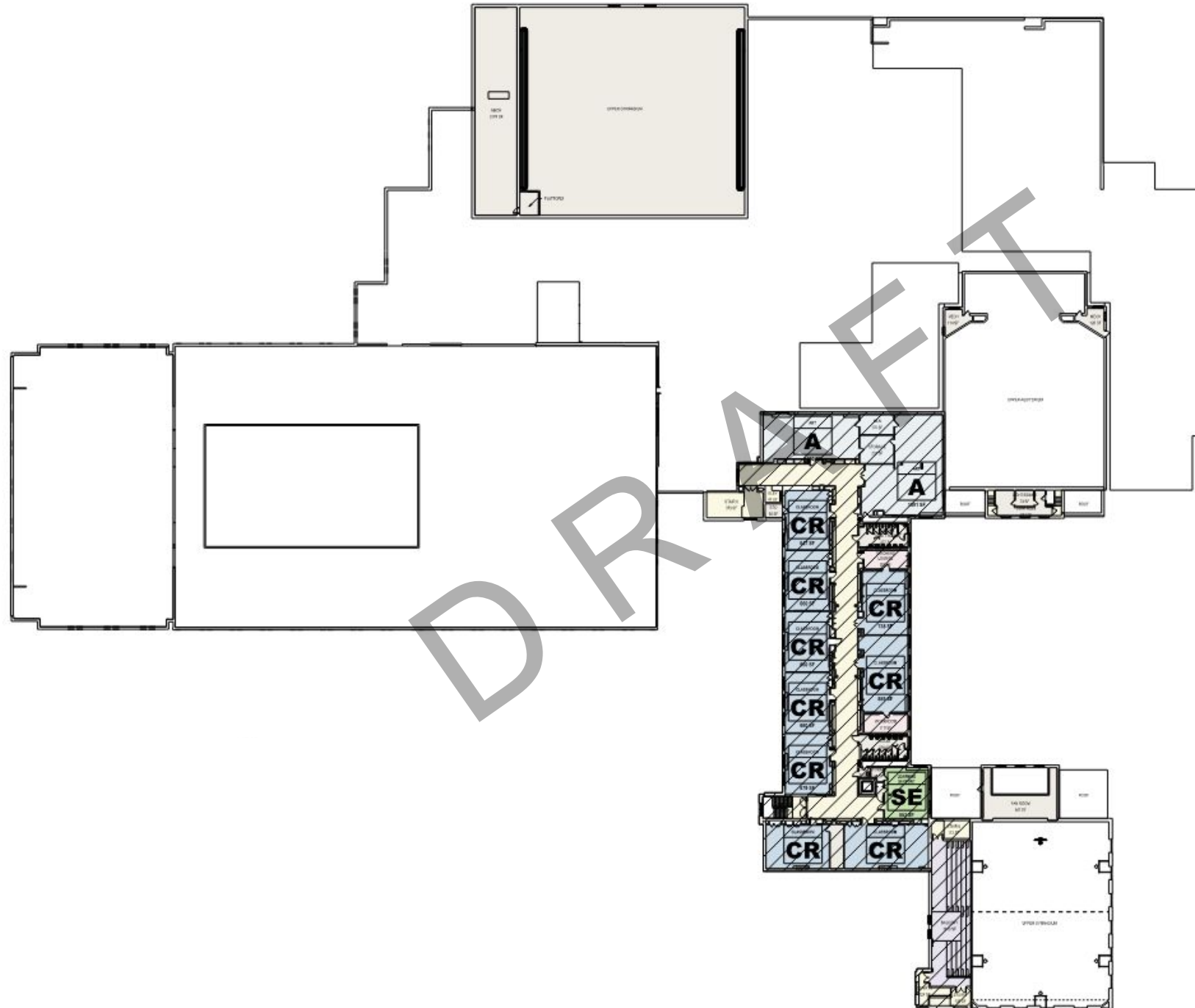
PROPOSED WYOMISSING AREA JR/SR HIGH SCHOOL



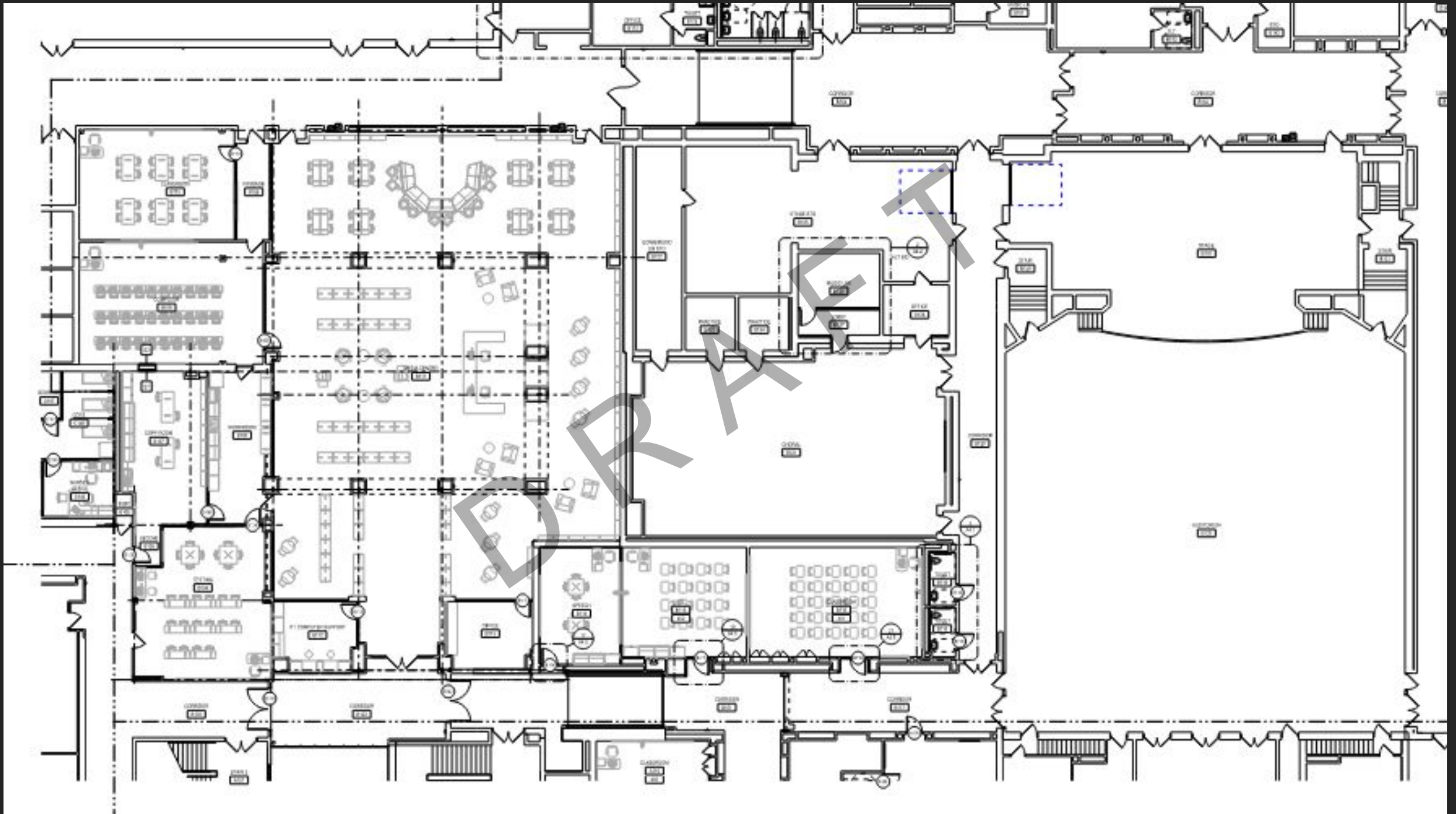
This is a detailed floor plan of the first floor of a school building. The plan is color-coded and labeled with room types and numbers. Key areas include:

- Classrooms (CR):** Numerous classrooms are distributed throughout the plan, primarily in blue. They are often numbered (e.g., CR 101, CR 102).
- Laboratories (SL, SE):** Science laboratories (SL) and special education rooms (SE) are shown in green, primarily along the left and bottom edges.
- Office (OF):** Various office spaces are scattered throughout the plan.
- Library (L):** A large library area is located in the center-right of the plan.
- Gymnasium (G):** A large gymnasium is located at the top center of the plan.
- Cafeteria (A):** A large cafeteria area is located on the right side of the plan.
- Music Room (M):** A music room is located in the top right corner.
- Other Rooms:** The plan also includes a central area marked with a large 'V', a large room marked 'A' (likely an auditorium or gym), and several smaller rooms like restrooms and storage.

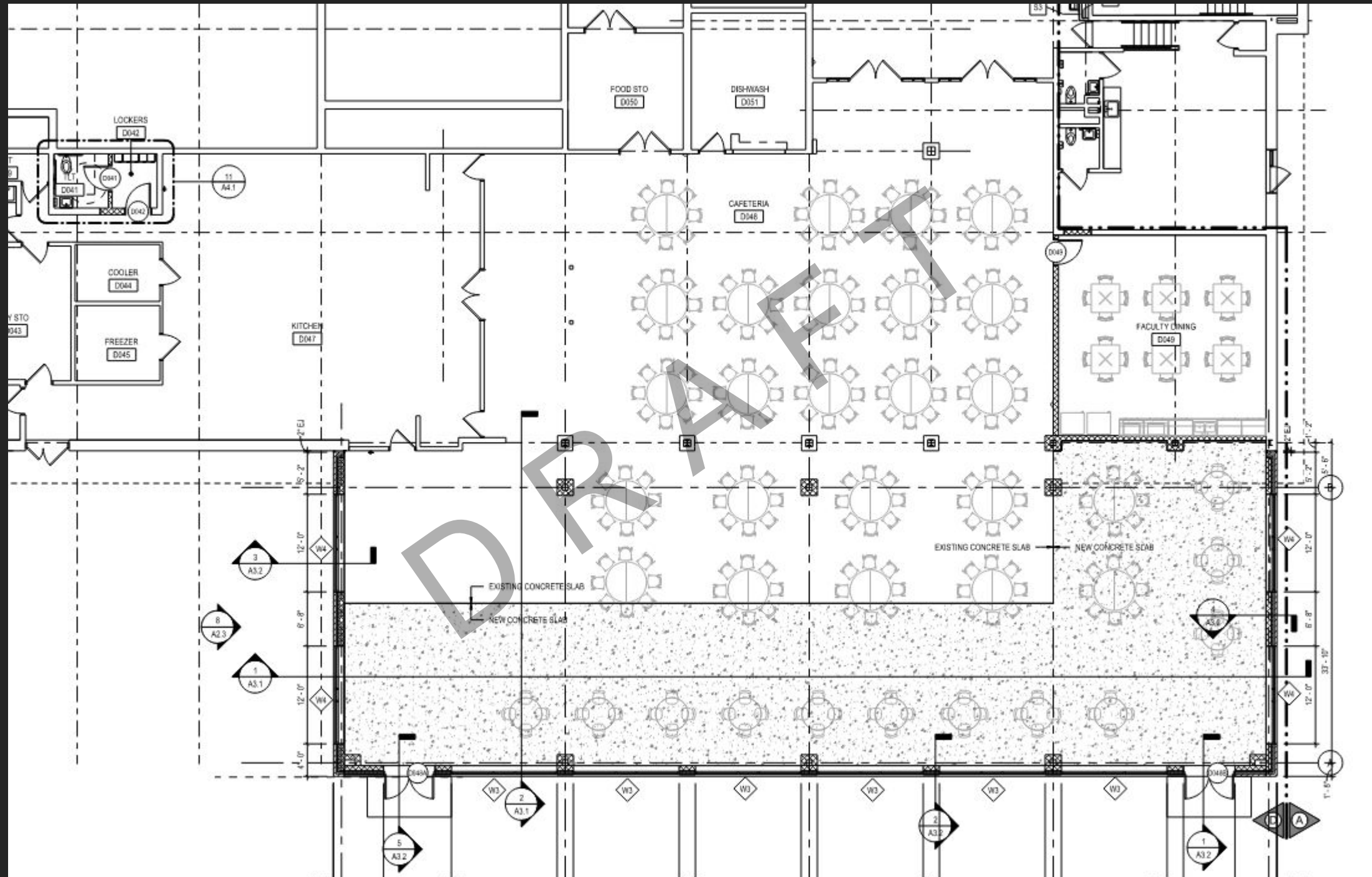
PROPOSED WYOMISSING AREA JR/SR HIGH SCHOOL



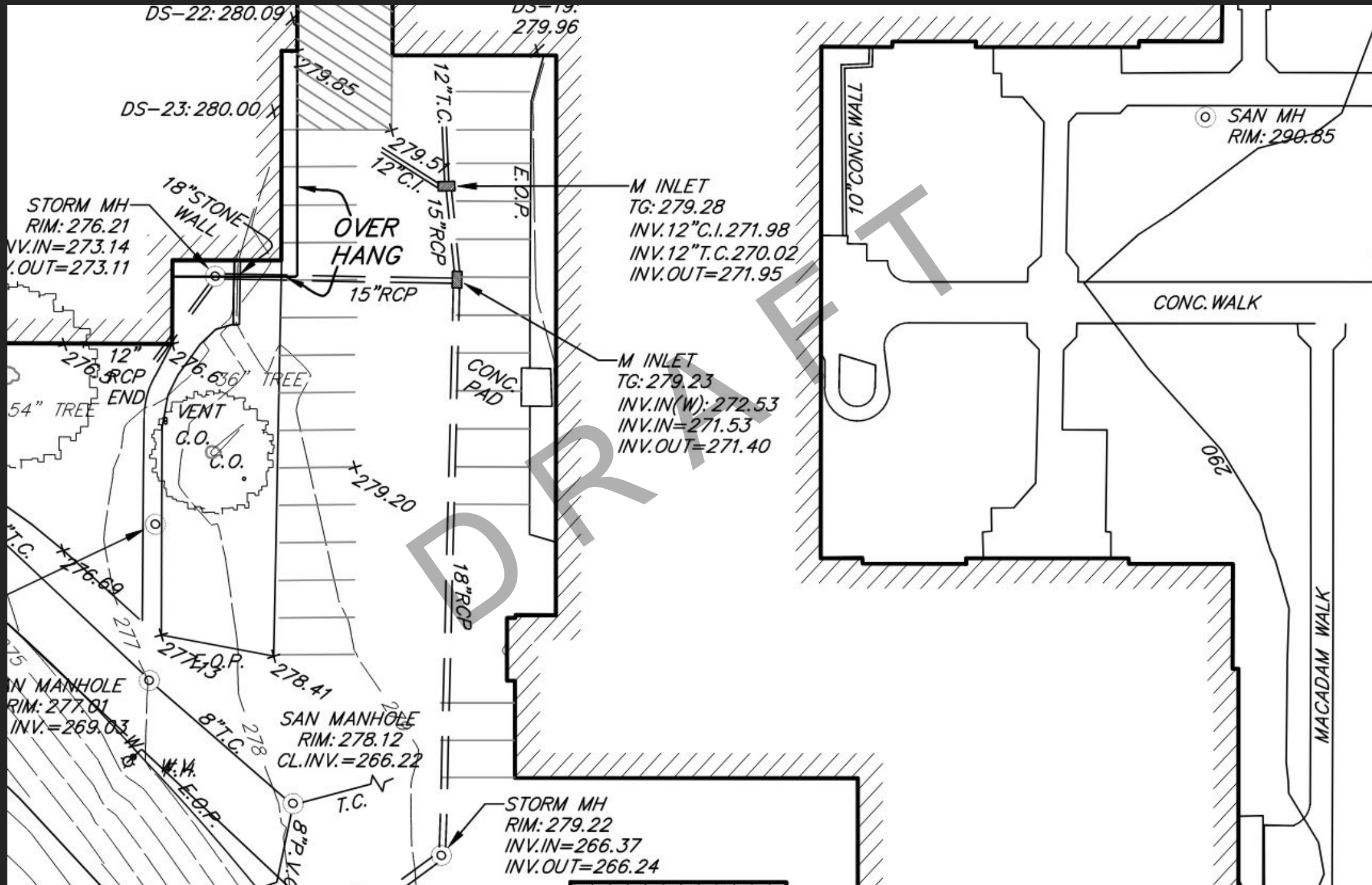
PROPOSED WYOMISSING AREA JR/SR HIGH SCHOOL



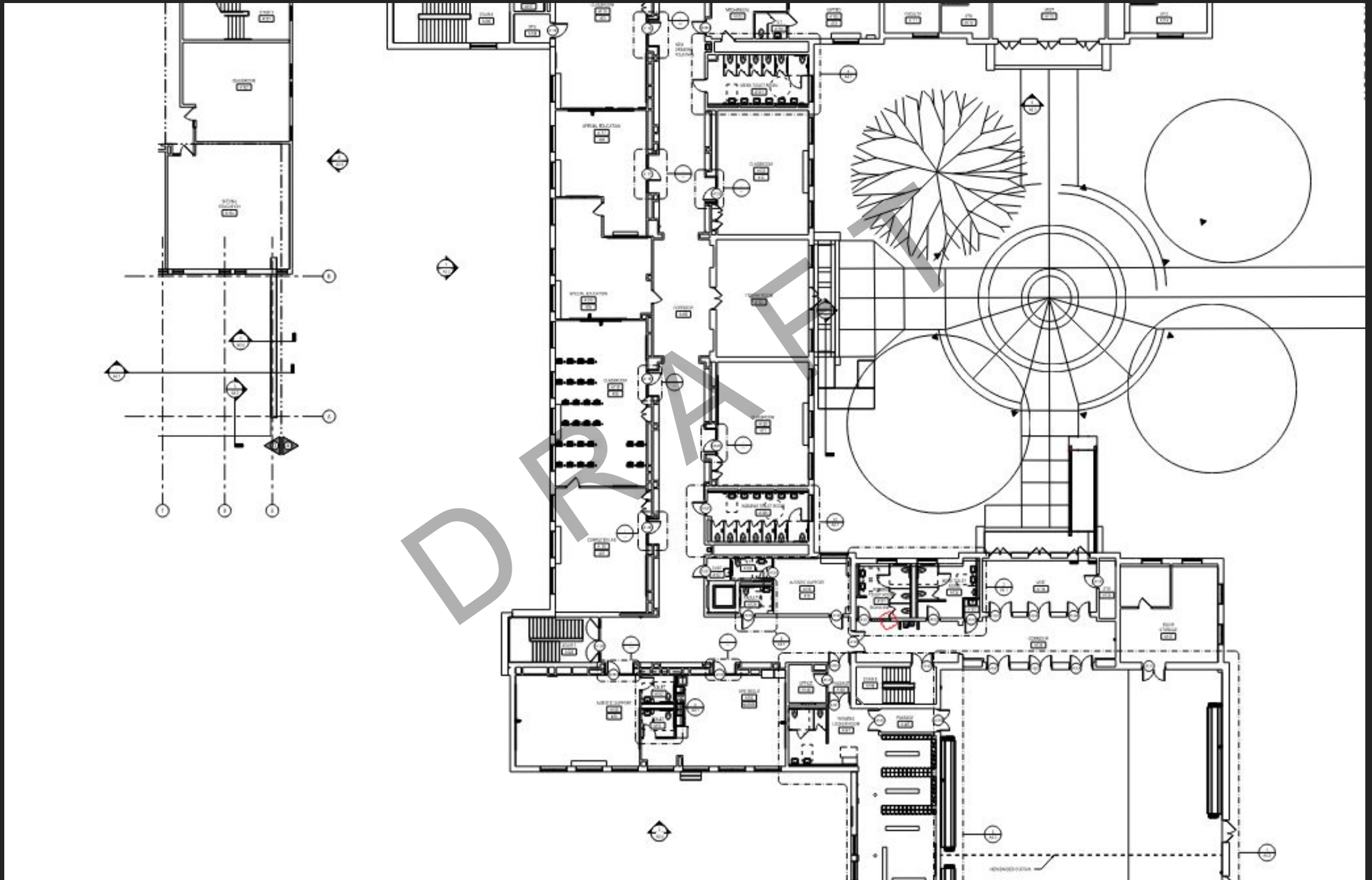
PROPOSED WYOMISSING AREA JR/SR HIGH SCHOOL



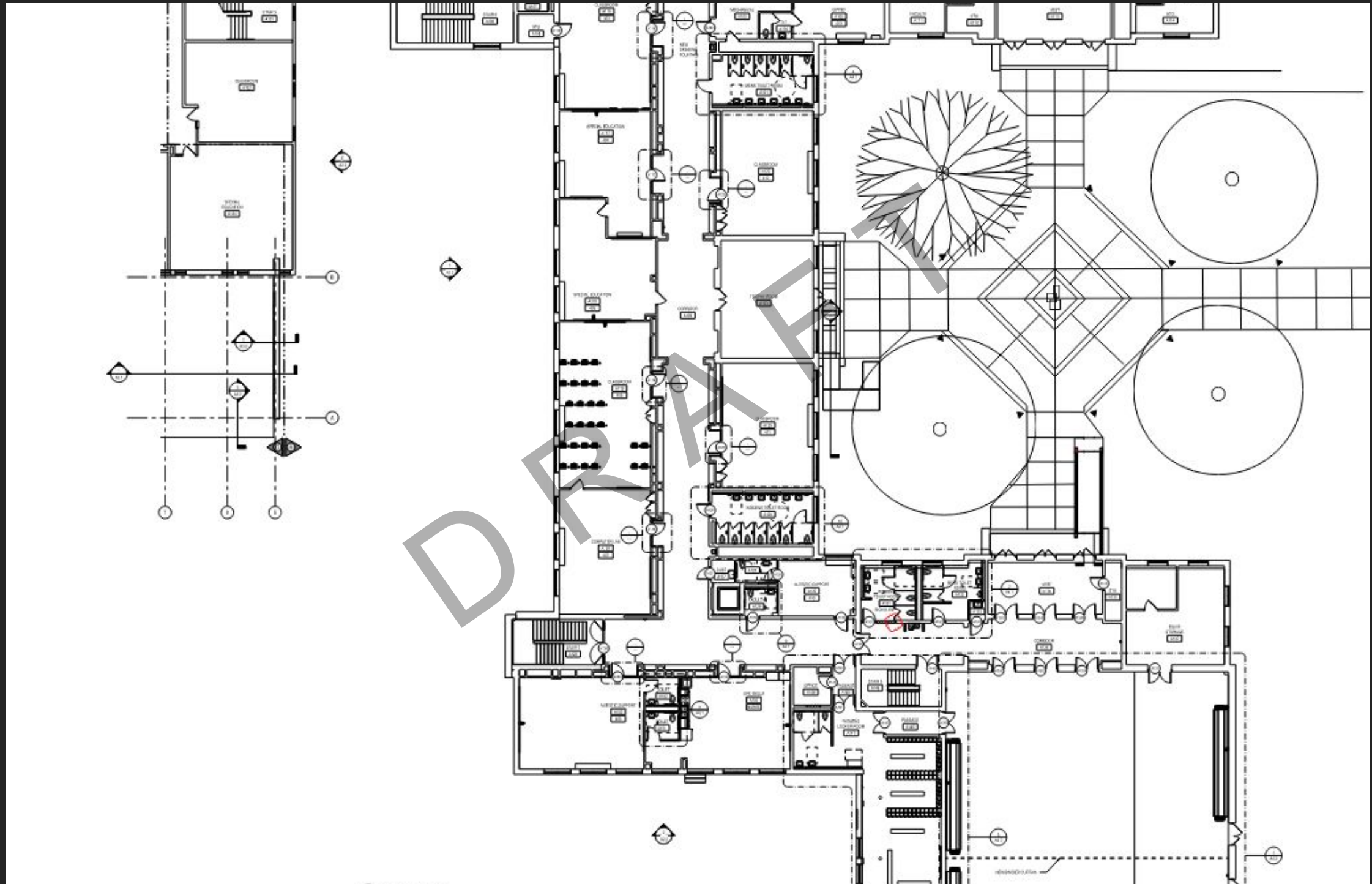
PROPOSED WYOMISSING AREA JR/SR HIGH SCHOOL



PROPOSED WYOMISSING AREA JR/SR HIGH SCHOOL



PROPOSED WYOMISSING AREA JR/SR HIGH SCHOOL



PROPOSED WYOMISSING AREA JR/SR HIGH SCHOOL



PROPOSED WYOMISSING AREA JR/SR HIGH SCHOOL



PROPOSED WYOMISSING AREA JR/SR HIGH SCHOOL



FUTURE MILESTONE DATES

02/15/21	Geotechnical Reports Issued
02/16/21	Administration & Food Service Review for Hills
02/17/21	Coordination Meeting with Consultants
02/17/21	Board Workshop
03/20/21	Coordination Meeting with District
04/20/21	Coordination & QA Meeting with District
04/12/21	Committee Meeting - Review Construction Docs
04/26/21	Board Meeting - Approve Construction Docs for Bidding
04/27/21	Advertise / Release Bidding Documents
05/20/21	Receive Bids
05/24/21	Board Meeting - Approve Bids
06/14/21	Start Construction
08/30/21	Substantial Completion
10/30/21	Final Completion

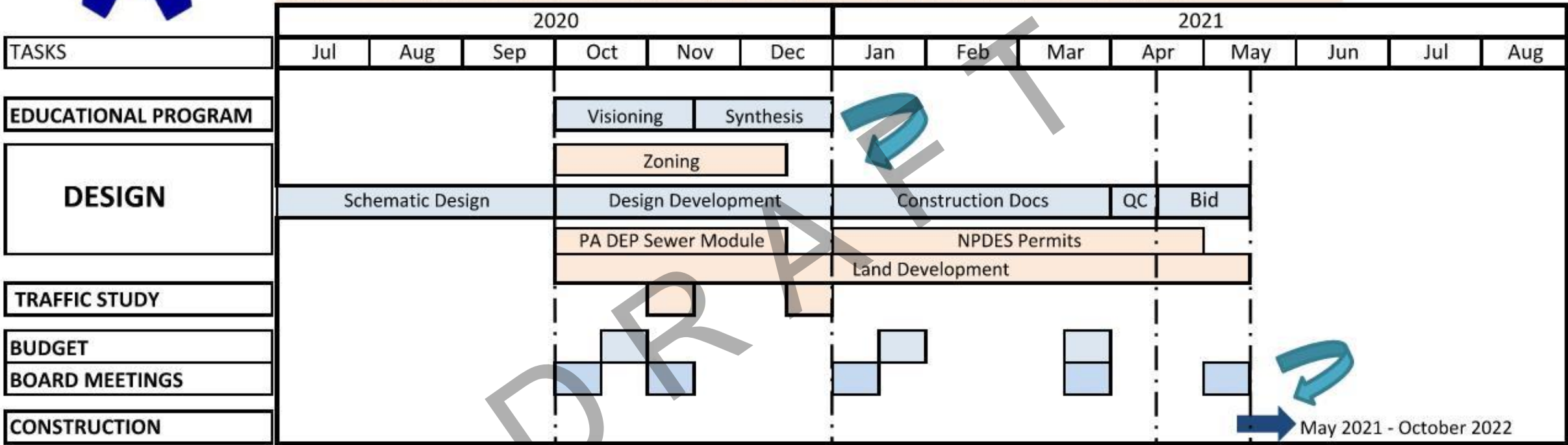
OVERALL PROJECT SCHEDULE



WYOMISSING AREA SCHOOL DISTRICT

DESIGN BUILDING RENOVATIONS & ADDITIONS

REGULATORY REVIEWS & APPROVALS



EDUCATIONAL PROGRAM

- Strategy sessions with faculty/staff/stakeholders
- Establish guiding principles and program
- Define physical parameters to support Vision
- Synthesis of input / Collaboration on design

DESIGN

- Preliminary designs implementing educational program
- Identifies building / site & organization
- Evaluate traffic and Penn Dot requirements

BUDGET

- Discuss scope of work / expectations
- Evaluate building, site and operational costs
- Preliminary costs / Final Board approved budget
- Develop alternates to control budget & flexibility

BOARD MEETINGS

- Proper planning to guide decision making
- Coloration with Board / Administration / Community
- Schedule / Budget



Providing a client oriented approach to
architecture

Questions/Discussions



Crabtree, Rohrbaugh & Associates
www.cra-architects.com